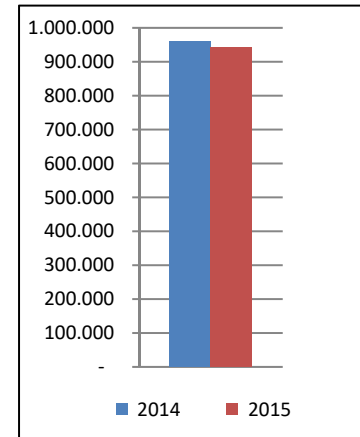
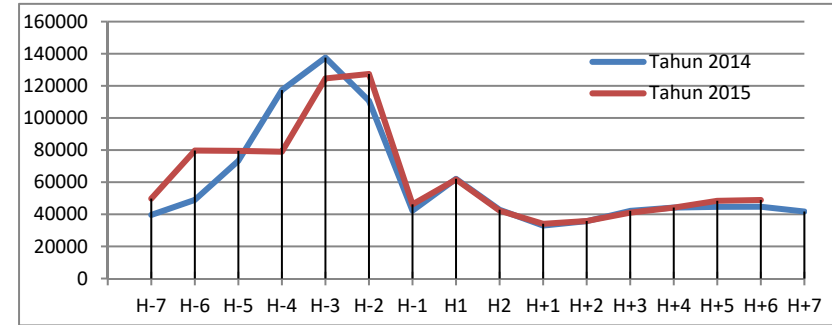


ANGKUTAN SUNGAI, DANAU DAN PENYEBERANGAN (ASDP)

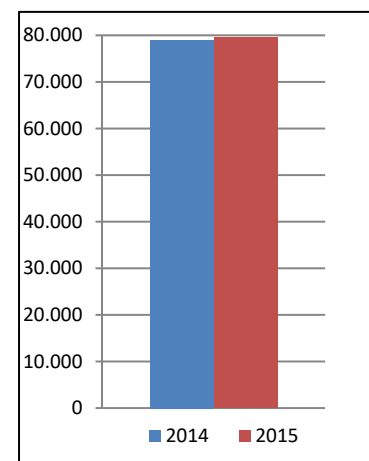
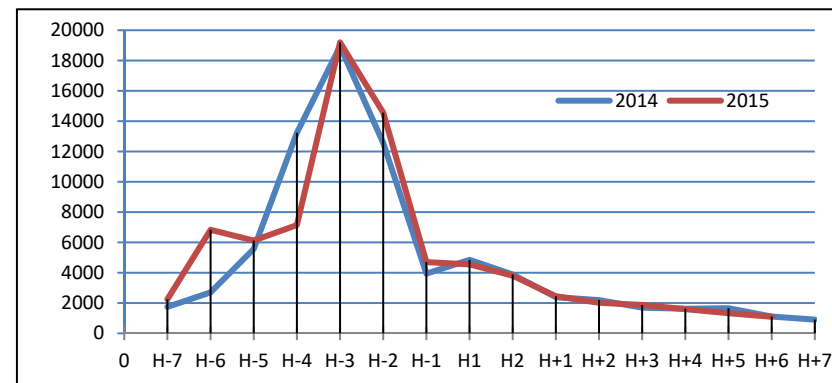
1.1 Penumpang Pejalan Kaki dan Dalam Kendaraan

TANGGAL	HARI	JUMLAH PENUMPANG		
		2014	2015	%
29-Jun-16	H-7	39.612	49.773	25,65
30-Jun-16	H-6	48.984	79.706	62,72
01-Jul-16	H-5	73.339	79.488	8,38
02-Jul-16	H-4	117.339	78.977	-32,69
03-Jul-16	H-3	137.582	124.606	-9,43
04-Jul-16	H-2	110.696	127.389	15,08
05-Jul-16	H-1	42.271	46.179	9,25
06-Jul-16	H1	62.094	61.682	-0,66
07-Jul-16	H2	42.814	42.263	-1,29
08-Jul-16	H+1	32.976	34.075	3,33
09-Jul-16	H+2	35.707	35.811	0,29
10-Jul-16	H+3	42.140	41.050	-2,59
11-Jul-16	H+4	44.186	44.172	-0,03
12-Jul-16	H+5	44.643	48.396	8,41
13-Jul-16	H+6	44.715	48.895	9,35
14-Jul-16	H+7	41.743		-100,00
TOTAL		960.841	942.462	-1,91



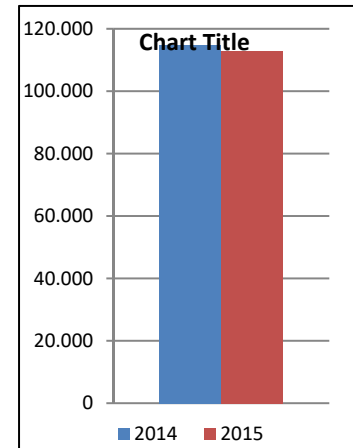
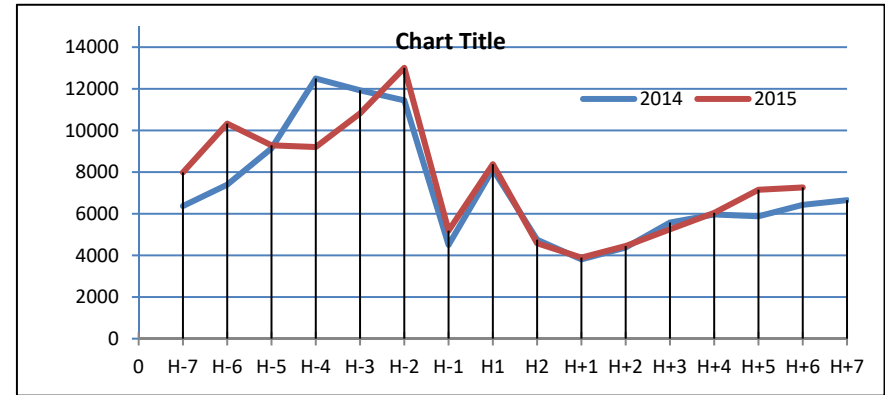
1.2 Penumpang Kendaraan Roda – 2

TANGGAL	HARI	JUMLAH RODA-2		
		2014	2015	%
	0			
29-Jun-16	H-7	1.746	2.250	28,87
30-Jun-16	H-6	2.705	6.832	152,57
01-Jul-16	H-5	5.567	6.120	9,93
02-Jul-16	H-4	13.235	7.145	-46,01
03-Jul-16	H-3	18.940	19.197	1,36
04-Jul-16	H-2	12.564	14.562	15,90
05-Jul-16	H-1	3.940	4.700	19,29
06-Jul-16	H1	4.849	4.550	-6,17
07-Jul-16	H2	3.882	3.801	-2,09
08-Jul-16	H+1	2.388	2.450	2,60
09-Jul-16	H+2	2.195	2.017	-8,11
10-Jul-16	H+3	1.697	1.873	10,37
11-Jul-16	H+4	1.622	1.596	-1,60
12-Jul-16	H+5	1.658	1.328	-19,90
13-Jul-16	H+6	1.109	1.095	-1,26
14-Jul-16	H+7	905		-100,00
TOTAL		79.002	79.516	0,65



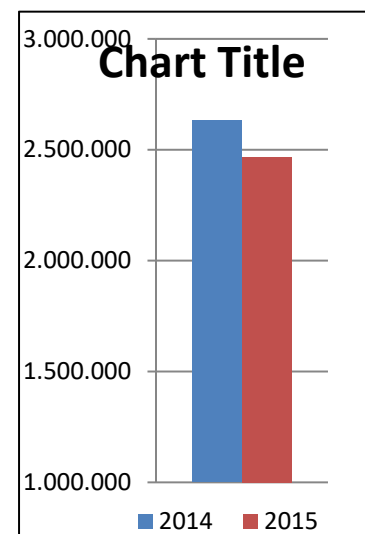
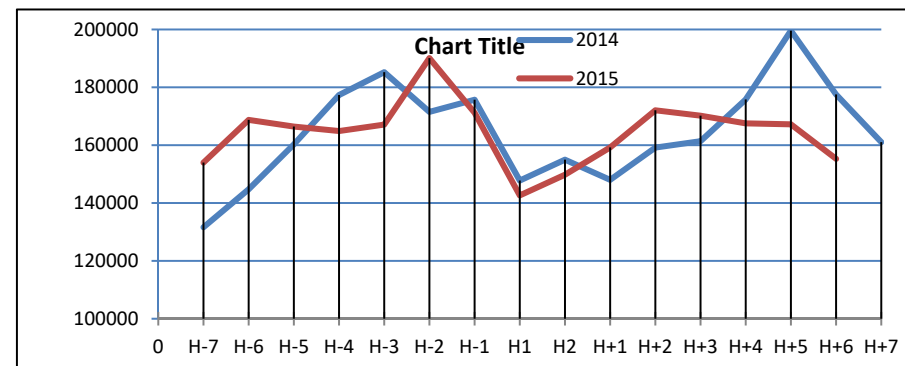
1.3. Kendaraan Roda ≥ 4

TANGGAL	HARI	JUMLAH RODA 4 / LEBIH		
		2014	2015	%
	0			
29-Jun-16	H-7	6.370	7.985	25,35
30-Jun-16	H-6	7.395	10.329	39,68
01-Jul-16	H-5	9.141	9.287	1,60
02-Jul-16	H-4	12.495	9.203	-26,35
03-Jul-16	H-3	11.928	10.821	-9,28
04-Jul-16	H-2	11.445	13.007	13,65
05-Jul-16	H-1	4.506	5.188	15,14
06-Jul-16	H1	8.136	8.376	2,95
07-Jul-16	H2	4.751	4.583	-3,54
08-Jul-16	H+1	3.808	3.893	2,23
09-Jul-16	H+2	4.377	4.452	1,71
10-Jul-16	H+3	5.576	5.251	-5,83
11-Jul-16	H+4	5.967	6.044	1,29
12-Jul-16	H+5	5.878	7.153	21,69
13-Jul-16	H+6	6.427	7.262	12,99
14-Jul-16	H+7	6.652		-100,00
TOTAL		114.852	112.834	-1,76



2. ANGKUTAN UDARABANDAR UDARA SOEKARNO-HATTA

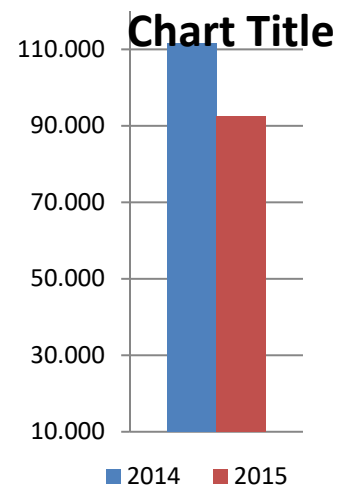
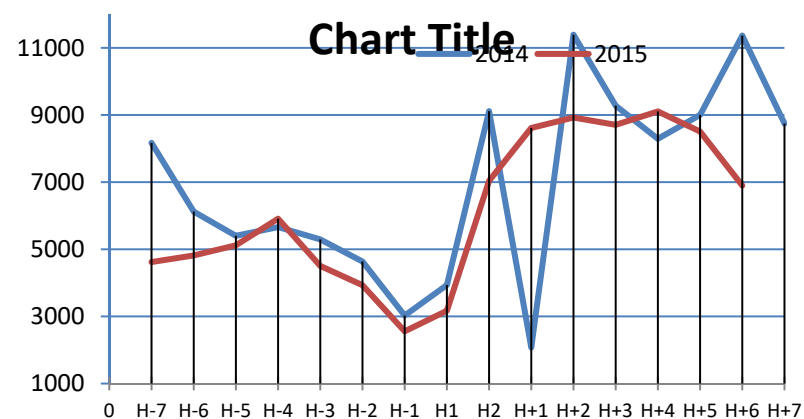
TANGGAL	HARI	JUMLAH PENUMPANG		
		2014	2015	%
	0			
29-Jun-16	H-7	131.633	153.995	16,99
30-Jun-16	H-6	144.745	168.740	16,58
01-Jul-16	H-5	160.278	166.428	3,84
02-Jul-16	H-4	177.336	164.879	-7,02
03-Jul-16	H-3	185.228	167.120	-9,78
04-Jul-16	H-2	171.499	190.093	10,84
05-Jul-16	H-1	175.712	171.184	-2,58
06-Jul-16	H1	147.779	142.638	-3,48
07-Jul-16	H2	154.980	149.789	-3,35
08-Jul-16	H+1	148.010	159.229	7,58
09-Jul-16	H+2	159.166	172.058	8,10
10-Jul-16	H+3	161.381	170.204	5,47
11-Jul-16	H+4	175.808	167.544	-4,70
12-Jul-16	H+5	199.576	167.209	-16,22
13-Jul-16	H+6	177.534	155.282	-12,53
14-Jul-16	H+7	161.042		-100,00
TOTAL		2.631.707	2.466.392	-6,28



3. ANGKUTAN KERETA API

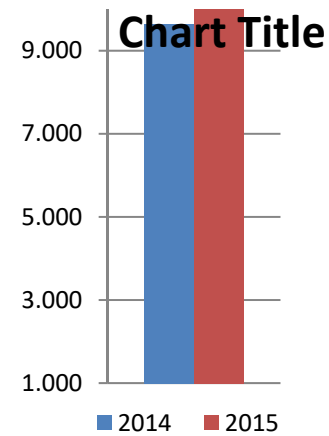
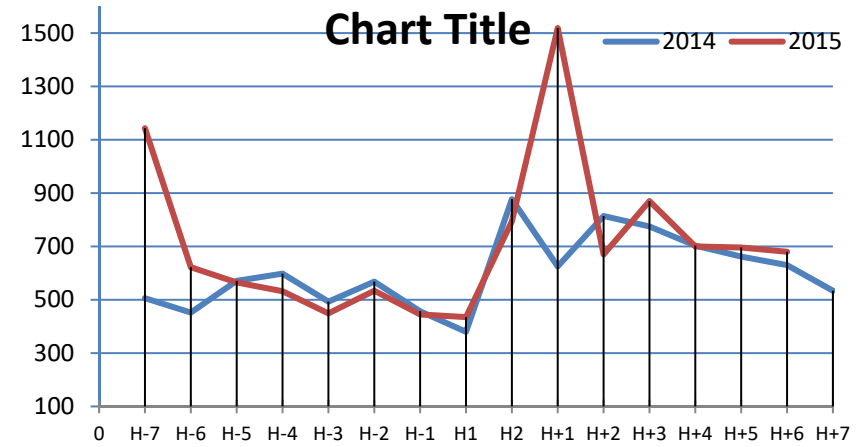
3.1. Stasiun Rangkasbitung

TANGGAL	HARI	JUMLAH PENUMPANG NAIK		
		2014	2015	%
	0			
29-Jun-16	H-7	8.170	4.620	-43,45
30-Jun-16	H-6	6.123	4.817	-21,33
01-Jul-16	H-5	5.401	5.119	-5,22
02-Jul-16	H-4	5.660	5.911	4,43
03-Jul-16	H-3	5.294	4.503	-14,94
04-Jul-16	H-2	4.635	3.930	-15,21
05-Jul-16	H-1	3.026	2.556	-15,53
06-Jul-16	H1	3.935	3.169	-19,47
07-Jul-16	H2	9.113	7.039	-22,76
08-Jul-16	H+1	2.075	8.614	315,13
09-Jul-16	H+2	11.392	8.925	-21,66
10-Jul-16	H+3	9.278	8.707	-6,15
11-Jul-16	H+4	8.290	9.106	9,84
12-Jul-16	H+5	9.000	8.507	-5,48
13-Jul-16	H+6	11.366	6.898	-39,31
14-Jul-16	H+7	8.746		-100,00
TOTAL		111.504	92.421	-17,11



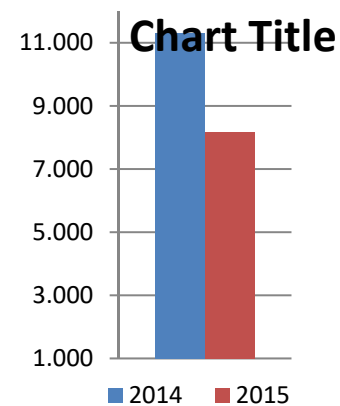
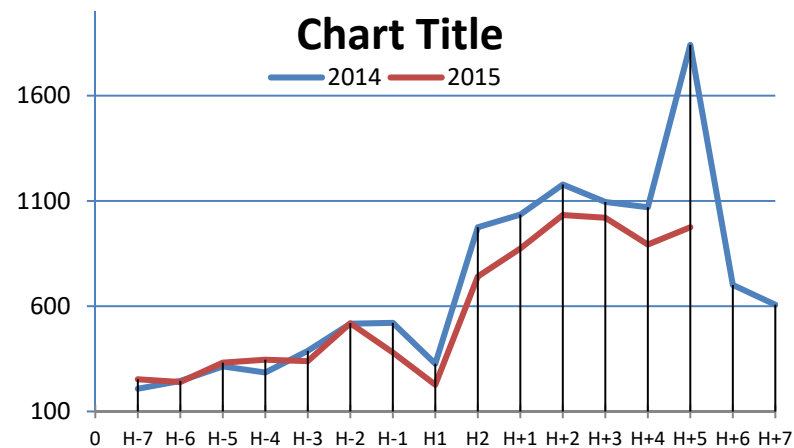
3.2. Stasiun Serang

TANGGAL	HARI	JUMLAH PENUMPANG NAIK		
		2014	2015	%
	0			
29-Jun-16	H-7	506	1.143	125,89
30-Jun-16	H-6	452	622	37,61
01-Jul-16	H-5	571	565	-1,05
02-Jul-16	H-4	598	532	-11,04
03-Jul-16	H-3	493	449	-8,92
04-Jul-16	H-2	568	534	-5,99
05-Jul-16	H-1	457	445	-2,63
06-Jul-16	H1	380	435	14,47
07-Jul-16	H2	877	794	-9,46
08-Jul-16	H+1	625	1.519	143,04
09-Jul-16	H+2	814	670	-17,69
10-Jul-16	H+3	775	870	12,26
11-Jul-16	H+4	703	700	-0,43
12-Jul-16	H+5	662	696	5,14
13-Jul-16	H+6	630	680	7,94
14-Jul-16	H+7	534		-100,00
TOTAL		9.645	10.654	10,46



3.3. Stasiun Merak

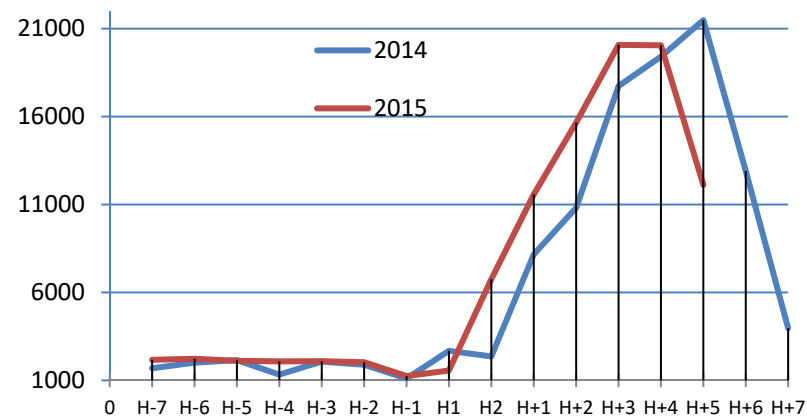
TANGGAL	HARI	JUMLAH PENUMPANG NAIK		
		2014	2015	%
	0			
29-Jun-16	H-7	208	253	21,63
30-Jun-16	H-6	245	240	-2,04
01-Jul-16	H-5	314	332	5,73
02-Jul-16	H-4	285	346	21,40
03-Jul-16	H-3	388	339	-12,63
04-Jul-16	H-2	517	519	0,39
05-Jul-16	H-1	521	380	-27,06
06-Jul-16	H1	327	227	-30,58
07-Jul-16	H2	975	741	-24,00
08-Jul-16	H+1	1.035	874	-15,56
09-Jul-16	H+2	1.178	1.033	-12,31
10-Jul-16	H+3	1.095	1.020	-6,85
11-Jul-16	H+4	1.070	893	-16,54
12-Jul-16	H+5	1.841	975	-47,04
13-Jul-16	H+6	701		-100,00
14-Jul-16	H+7	607		-100,00
TOTAL		11.307	8.172	-27,73



4. ANGKUTAN PENUMPANG UMUM

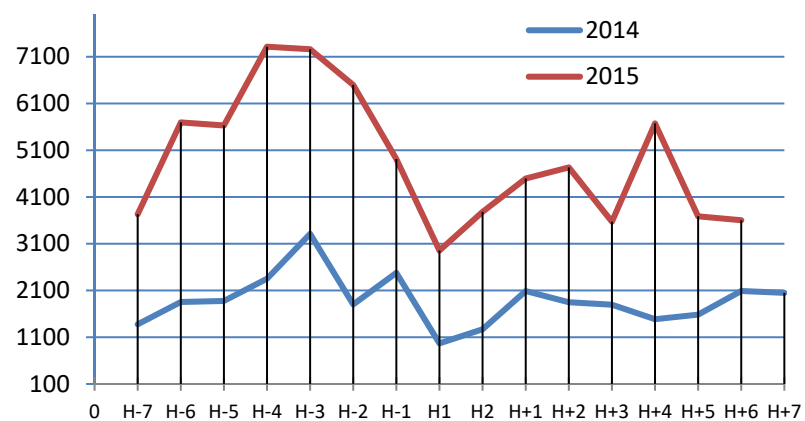
4.1. Terminal Terpadu Merak

TANGGAL	HARI	JUMLAH BUS BERANGKAT	JUMLAH PENUMPANG NAIK		%
		2015	2014	2015	
	0				
29-Jun-16	H-7	385	1.688	2.167	28,38
30-Jun-16	H-6	445	2.006	2.229	11,12
01-Jul-16	H-5	451	2.150	2.109	-1,91
02-Jul-16	H-4	381	1.326	2.079	56,79
03-Jul-16	H-3	383	2.068	2.089	1,02
04-Jul-16	H-2	468	1.890	2.032	7,51
05-Jul-16	H-1	291	1.102	1.246	13,07
06-Jul-16	H1	323	2.681	1.557	-41,92
07-Jul-16	H2	427	2.359	6.753	186,27
08-Jul-16	H+1	458	8.166	11.573	41,72
09-Jul-16	H+2	547	10.814	15.657	44,78
10-Jul-16	H+3	621	17.740	20.076	13,17
11-Jul-16	H+4	576	19.408	20.055	3,33
12-Jul-16	H+5	537	21.484	12.121	-43,58
13-Jul-16	H+6		12.908		-100,00
14-Jul-16	H+7		3.966		-100,00
TOTAL		6.293	111.756	101.743	120



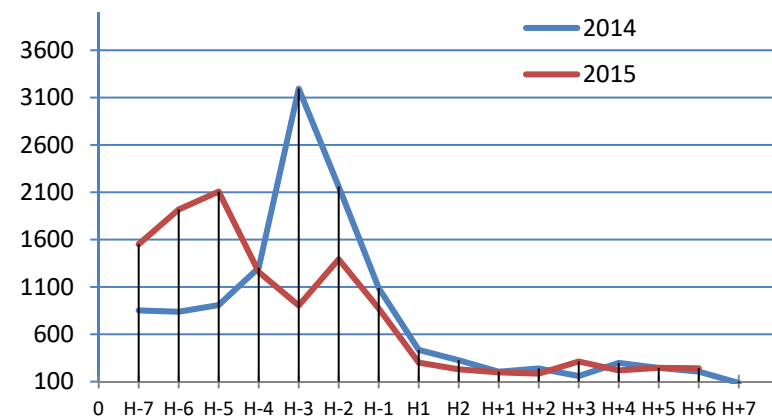
4.2. Terminal Pakupatan, Serang

TANGGAL	HARI	JUMLAH BUS BERANGKAT	JUMLAH PENUMPANG NAIK		%
		2015	2014	2015	
	0				
29-Jun-16	H-7	743	1.376	3.731	171,15
30-Jun-16	H-6	880	1.854	5.695	207,17
01-Jul-16	H-5	910	1.876	5.630	200,11
02-Jul-16	H-4	1.042	2.351	7.315	211,14
03-Jul-16	H-3	1.089	3.311	7.261	119,30
04-Jul-16	H-2	1.114	1.802	6.497	260,54
05-Jul-16	H-1	892	2.477	4.912	98,30
06-Jul-16	H1	593	968	2.954	205,17
07-Jul-16	H2	693	1.270	3.782	197,80
08-Jul-16	H+1	786	2.088	4.495	115,28
09-Jul-16	H+2	784	1.848	4.732	156,06
10-Jul-16	H+3	897	1.796	3.572	98,89
11-Jul-16	H+4	967	1.485	5.674	282,09
12-Jul-16	H+5	771	1.584	3.686	132,70
13-Jul-16	H+6	720	2.089	3.602	72,43
14-Jul-16	H+7		2.049		-100,00
TOTAL		12.881	30.224	73.538	2.428



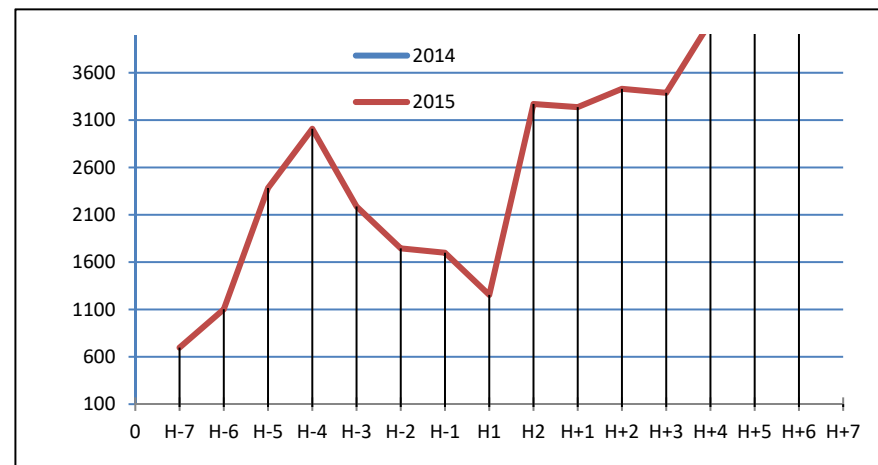
4.3. Terminal Porisplawad, Tangerang

TANGGAL	HARI	JUMLAH BUS BERANGKAT	JUMLAH PENUMPANG NAIK		%
		2015	2014	2015	
	0				
29-Jun-16	H-7	247	852	1.552	82,16
30-Jun-16	H-6	255	838	1.918	128,88
01-Jul-16	H-5	259	909	2.107	131,79
02-Jul-16	H-4	254	1.302	1.258	-3,38
03-Jul-16	H-3	274	3.194	904	-71,70
04-Jul-16	H-2	237	2.160	1.393	-35,51
05-Jul-16	H-1	188	1.088	873	-19,76
06-Jul-16	H1	127	435	301	-30,80
07-Jul-16	H2	87	326	230	-29,45
08-Jul-16	H+1	136	205	198	-3,41
09-Jul-16	H+2	220	239	184	-23,01
10-Jul-16	H+3	301	159	313	96,86
11-Jul-16	H+4	300	298	219	-26,51
12-Jul-16	H+5	316	245	246	0,41
13-Jul-16	H+6	307	206	241	16,99
14-Jul-16	H+7		86		-100,00
TOTAL		3.508	12.542	11.937	114



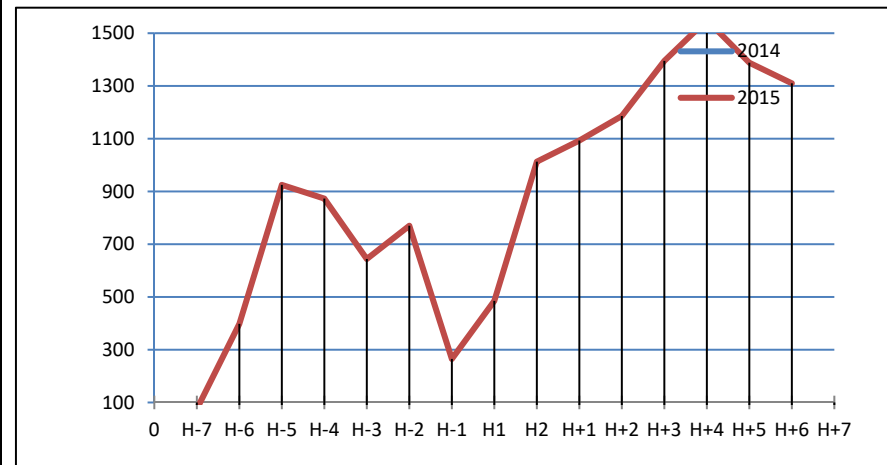
4.4. Terminal Kadu Agung Kab. Lebak

TANGGAL	HARI	JUMLAH BUS BERANGKAT	JUMLAH PENUMPANG NAIK		%
		2015	2014	2015	
	0				
29-Jun-16	H-7	80	0	697	#DIV/0!
30-Jun-16	H-6	88	0	1.102	#DIV/0!
01-Jul-16	H-5	82	0	2.383	#DIV/0!
02-Jul-16	H-4	100	0	3.008	#DIV/0!
03-Jul-16	H-3	97	0	2.188	#DIV/0!
04-Jul-16	H-2	96	0	1.745	#DIV/0!
05-Jul-16	H-1	67	0	1.699	#DIV/0!
06-Jul-16	H1	35	0	1.254	#DIV/0!
07-Jul-16	H2	92	0	3.270	#DIV/0!
08-Jul-16	H+1	88	0	3.237	#DIV/0!
09-Jul-16	H+2	107	0	3.430	#DIV/0!
10-Jul-16	H+3	99	0	3.388	#DIV/0!
11-Jul-16	H+4	83	0	4.138	#DIV/0!
12-Jul-16	H+5	80	0	4.148	#DIV/0!
13-Jul-16	H+6	95	0	4.118	#DIV/0!
14-Jul-16	H+7		0		#DIV/0!
TOTAL		1.289	-	39.805	#DIV/0!



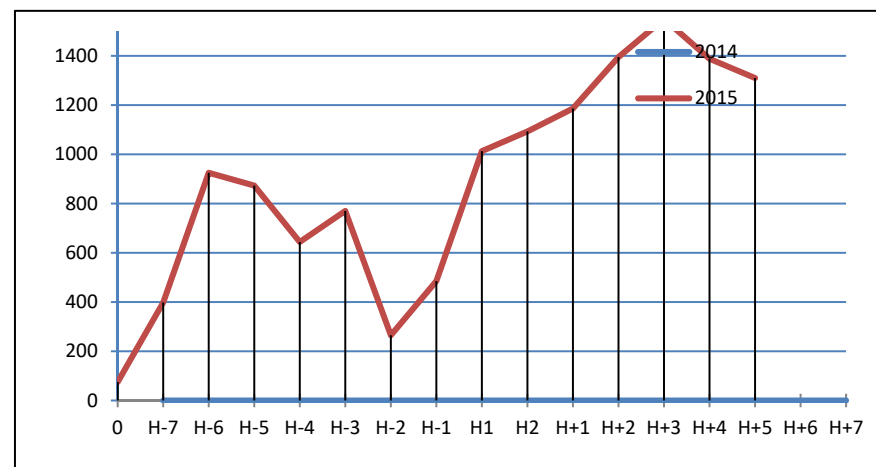
4.5. Terminal Kadu Banen Kab. Pandeglang

TANGGAL	HARI	JUMLAH BUS BERANGKAT	JUMLAH PENUMPANG NAIK		%
		2015	2014	2015	
	0				
29-Jun-16	H-7	100	0	75	#DIV/0!
30-Jun-16	H-6	106	0	398	#DIV/0!
01-Jul-16	H-5	119	0	925	#DIV/0!
02-Jul-16	H-4	112	0	873	#DIV/0!
03-Jul-16	H-3	99	0	644	#DIV/0!
04-Jul-16	H-2	102	0	770	#DIV/0!
05-Jul-16	H-1	50	0	265	#DIV/0!
06-Jul-16	H1	77	0	485	#DIV/0!
07-Jul-16	H2	105	0	1.013	#DIV/0!
08-Jul-16	H+1	100	0	1.093	#DIV/0!
09-Jul-16	H+2	110	0	1.186	#DIV/0!
10-Jul-16	H+3	125	0	1.395	#DIV/0!
11-Jul-16	H+4	119	0	1.550	#DIV/0!
12-Jul-16	H+5	113	0	1.388	#DIV/0!
13-Jul-16	H+6	109	0	1.310	#DIV/0!
14-Jul-16	H+7		0		#DIV/0!
TOTAL		1.546	-	13.370	#DIV/0!



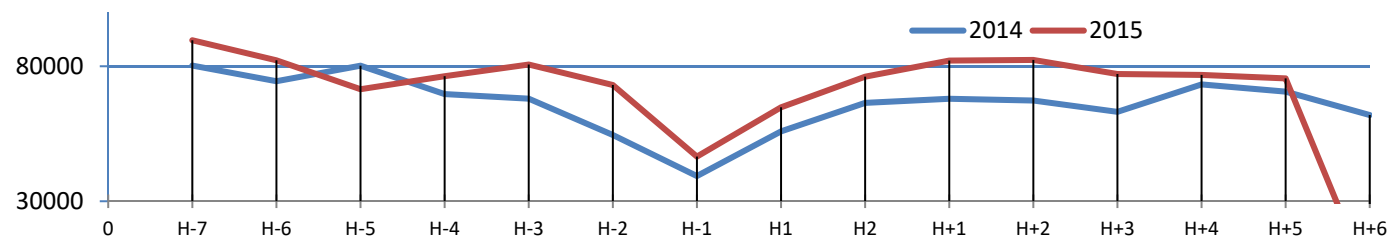
4.6. Terminal Labuan Kab. Pandeglang

TANGGAL	HARI	JUMLAH BUS BERANGKAT	JUMLAH PENUMPANG NAIK		%
		2015	2014	2015	
	0				
29-Jun-16	H-7	93	0	609	#DIV/0!
30-Jun-16	H-6	105	0	686	#DIV/0!
01-Jul-16	H-5	120	0	873	#DIV/0!
02-Jul-16	H-4	113	0	737	#DIV/0!
03-Jul-16	H-3	102	0	748	#DIV/0!
04-Jul-16	H-2	111	0	724	#DIV/0!
05-Jul-16	H-1	72	0	304	#DIV/0!
06-Jul-16	H1	49	0	221	#DIV/0!
07-Jul-16	H2	105	0	846	#DIV/0!
08-Jul-16	H+1	100	0	1.067	#DIV/0!
09-Jul-16	H+2	110	0	1.223	#DIV/0!
10-Jul-16	H+3	121	0	1.254	#DIV/0!
11-Jul-16	H+4	120	0	1.470	#DIV/0!
12-Jul-16	H+5	113	0	1.388	#DIV/0!
13-Jul-16	H+6	112	0	1.326	#DIV/0!
14-Jul-16	H+7		0		#DIV/0!
TOTAL		1.546	-	13.476	#DIV/0!



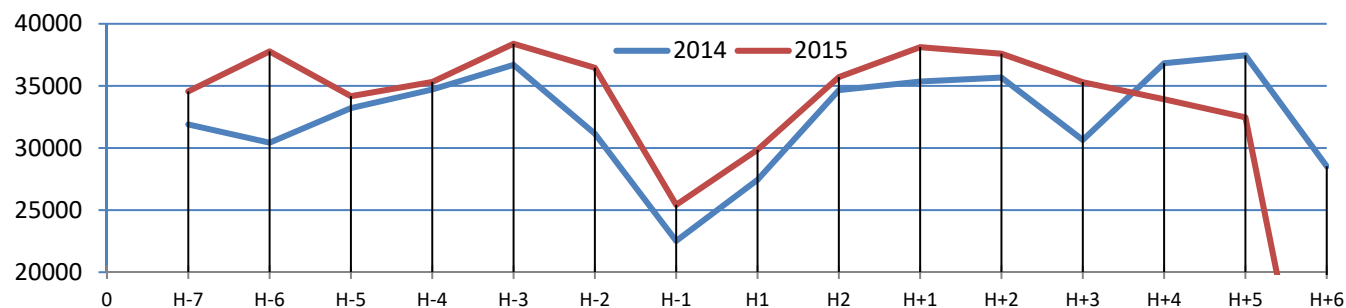
5. ARUS LALU LINTAS KENDARAAN DI JALAN TOL JAKARTA–MERAK

5.1. Gerbang Tol Cikupa



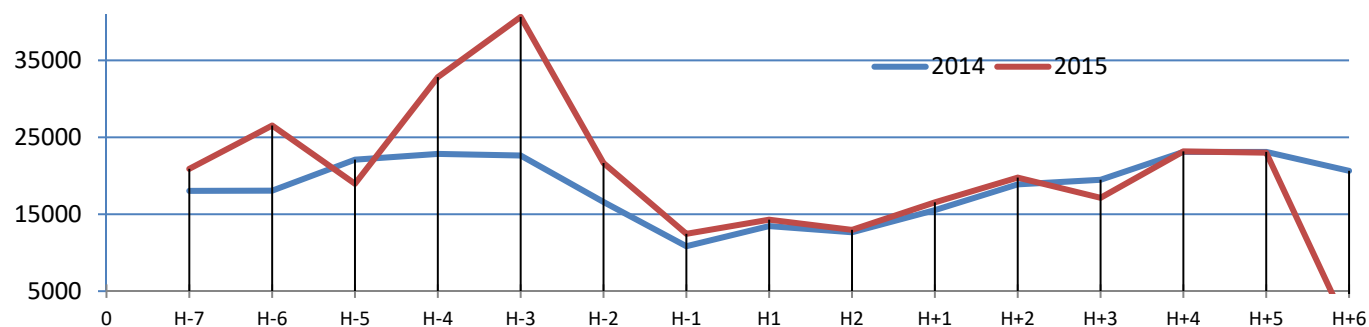
TANGGAL	HARI	2014			2015			%
		KELUAR	MASUK	JUMLAH	KELUAR	MASUK	JUMLAH	
	0							
29-Jun-16	H-7	38.750	41.507	80.257	43.065	46.562	89.627	11,67
30-Jun-16	H-6	36.053	38.405	74.458	36.719	45.477	82.196	10,39
01-Jul-16	H-5	37.454	42.757	80.211	35.489	36.007	71.496	-10,87
02-Jul-16	H-4	28.507	41.185	69.692	35.971	40.334	76.305	9,49
03-Jul-16	H-3	27.716	40.274	67.990	37.334	43.303	80.637	18,60
04-Jul-16	H-2	23.189	31.359	54.548	33.560	39.487	73.047	33,91
05-Jul-16	H-1	16.070	23.268	39.338	21.019	25.527	46.546	18,32
06-Jul-16	H1	23.607	32.278	55.885	29.184	35.603	64.787	15,93
07-Jul-16	H2	28.989	37.449	66.438	36.276	39.865	76.141	14,60
08-Jul-16	H+1	31.035	36.932	67.967	43.287	38.811	82.098	20,79
09-Jul-16	H+2	31.666	35.641	67.307	43.843	38.503	82.346	22,34
10-Jul-16	H+3	28.426	34.698	63.124	42.100	35.030	77.130	22,19
11-Jul-16	H+4	32.838	40.431	73.269	38.841	37.947	76.788	4,80
12-Jul-16	H+5	33.644	36.959	70.603	37.765	37.733	75.498	6,93
13-Jul-16	H+6	26.684	35.247	61.931			-	-100,00
14-Jul-16	H+7	27.165	37.504	64.669				-100,00
TOTAL		471.793	585.894	1.057.687	514.453	540.189	1.054.642	99

5.2. Gerbang Tol Serang Timur



TANGGAL	HARI	2014			2015			%
		KELUAR	MASUK	JUMLAH	KELUAR	MASUK	JUMLAH	
	0							
29-Jun-16	H-7	15.981	15.914	31.895	17.012	17.546	34.558	8,35
30-Jun-16	H-6	14.961	15.465	30.426	19.041	18.736	37.777	24,16
01-Jul-16	H-5	16.531	16.679	33.210	16.300	17.872	34.172	2,90
02-Jul-16	H-4	17.043	17.667	34.710	17.440	17.879	35.319	1,75
03-Jul-16	H-3	18.497	18.197	36.694	19.281	19.112	38.393	4,63
04-Jul-16	H-2	15.903	15.251	31.154	18.533	17.927	36.460	17,03
05-Jul-16	H-1	11.957	10.563	22.520	13.740	11.683	25.423	12,89
06-Jul-16	H1	14.345	13.094	27.439	15.655	14.206	29.861	8,83
07-Jul-16	H2	17.421	17.238	34.659	17.599	18.113	35.712	3,04
08-Jul-16	H+1	16.983	18.371	35.354	17.720	20.398	38.118	7,82
09-Jul-16	H+2	16.882	18.790	35.672	18.741	18.852	37.593	5,39
10-Jul-16	H+3	15.251	15.397	30.648	16.880	18.416	35.296	15,17
11-Jul-16	H+4	17.937	18.885	36.822	16.644	17.281	33.925	-7,87
12-Jul-16	H+5	17.331	20.128	37.459	16.144	16.323	32.467	-13,33
13-Jul-16	H+6	14.182	14.347	28.529			-	-100,00
14-Jul-16	H+7	14.240	14.510	28.750				-100,00
TOTAL		255.445	260.496	515.941	240.730	244.344	485.074	-5,98

5.3. Gerbang Tol Merak



TANGGAL	HARI	2014			2015			%
		KELUAR	MASUK	JUMLAH	KELUAR	MASUK	JUMLAH	
	0							
29-Jun-16	H-7	9.906	8.132	18.038	12.046	8.852	20.898	15,86
30-Jun-16	H-6	10.115	7.946	18.061	12.585	13.945	26.530	46,89
01-Jul-16	H-5	13.576	8.516	22.092	10.945	8.014	18.959	-14,18
02-Jul-16	H-4	14.165	8.673	22.838	19.568	13.251	32.819	43,70
03-Jul-16	H-3	14.338	8.294	22.632	23.299	17.350	40.649	79,61
04-Jul-16	H-2	9.713	6.883	16.596	13.849	7.804	21.653	30,47
05-Jul-16	H-1	6.499	4.341	10.840	7.285	5.169	12.454	14,89
06-Jul-16	H1	8.744	4.714	13.458	9.320	4.974	14.294	6,21
07-Jul-16	H2	6.595	6.061	12.656	6.891	6.073	12.964	2,43
08-Jul-16	H+1	6.760	8.771	15.531	6.961	9.581	16.542	6,51
09-Jul-16	H+2	7.432	11.451	18.883	7.240	12.519	19.759	4,64
10-Jul-16	H+3	7.799	11.676	19.475	7.901	9.230	17.131	-12,04
11-Jul-16	H+4	9.403	13.696	23.099	12.396	10.769	23.165	0,29
12-Jul-16	H+5	8.844	14.255	23.099	10.427	12.572	22.999	-0,43
13-Jul-16	H+6	9.103	11.541	20.644			-	-100,00
14-Jul-16	H+7	9.714	11.055	20.769			-	-100,00
TOTAL		152.706	146.005	298.711	160.713	140.103	300.816	0,70