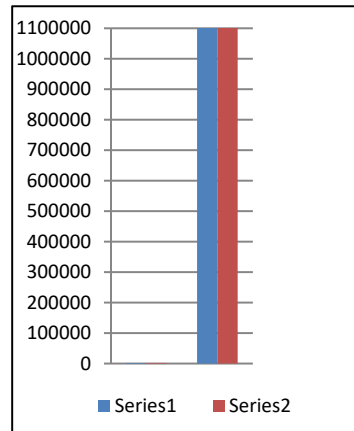
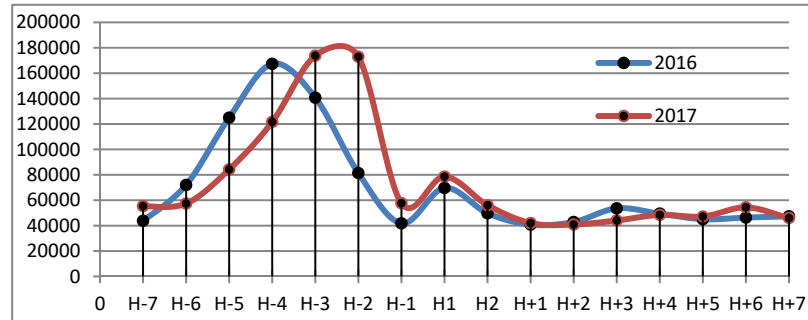


# ANGKUTAN SUNGAI, DANAU DAN PENYEBERANGAN (ASDP)

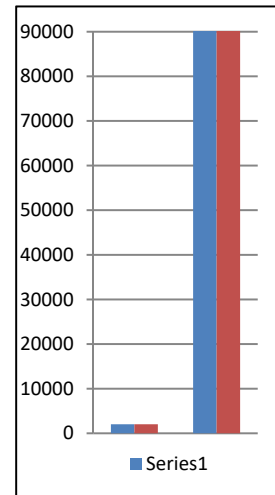
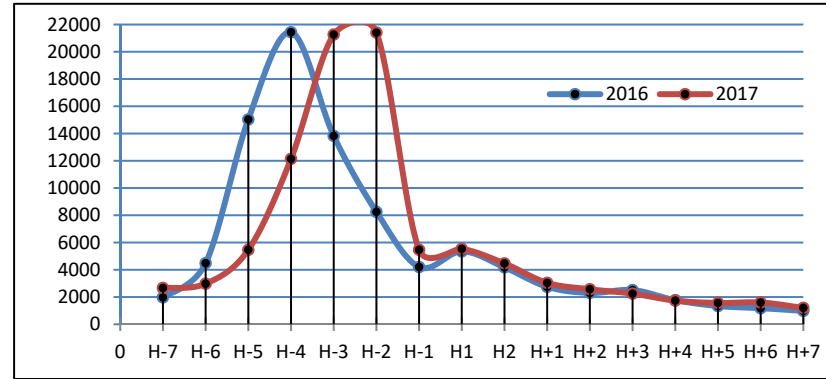
## 1.1 Penumpang Pejalan Kaki dan Dalam Kendaraan

TANGGAL	HARI	JUMLAH PENUMPANG		
		2016	2017	%
	0			
18-Jun-17	H-7	43.773	55.353	26,45
19-Jun-17	H-6	72.033	57.384	-20,34
20-Jun-17	H-5	125.003	84.239	-32,61
21-Jun-17	H-4	167.337	121.669	-27,29
22-Jun-17	H-3	140.684	173.775	23,52
23-Jun-17	H-2	81.346	172.875	112,52
24-Jun-17	H-1	41.797	57.668	37,97
25-Jun-17	H1	69.696	78.589	12,76
26-Jun-17	H2	49.724	56.091	12,80
27-Jun-17	H+1	40.854	42.020	2,85
28-Jun-17	H+2	42.840	40.875	-4,59
29-Jun-17	H+3	53.602	44.081	-17,76
30-Jun-17	H+4	49.434	48.435	-2,02
01-Jul-17	H+5	45.078	47.196	4,70
02-Jul-17	H+6	46.343	54.397	17,38
03-Jul-17	H+7	47.319	46.030	-2,72
<b>TOTAL</b>		<b>1.116.863</b>	<b>1.180.677</b>	<b>5,71</b>



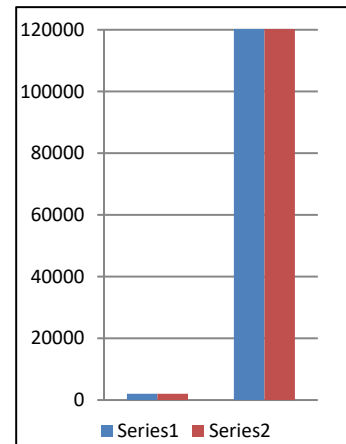
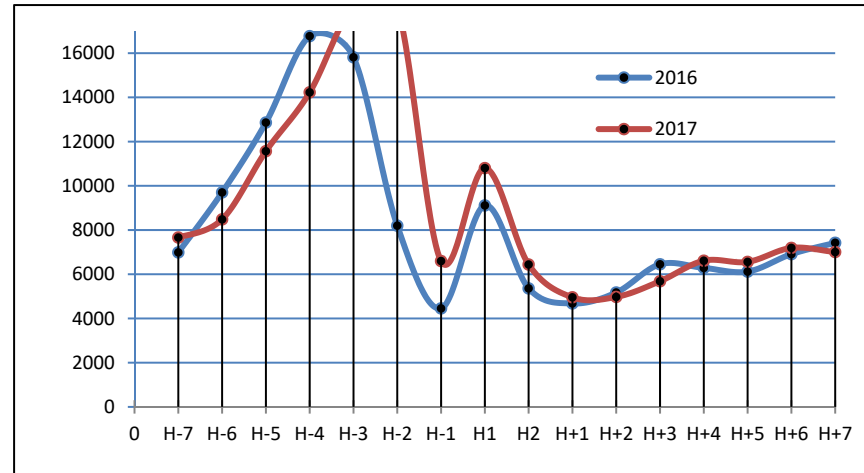
## 1.2 Kendaraan Roda – 2

TANGGAL	HARI	JUMLAH RODA-2		
		2016	2017	%
	0			
18-Jun-17	H-7	1.972	2.668	35,29
19-Jun-17	H-6	4.486	2.977	-33,64
20-Jun-17	H-5	15.033	5.467	-63,63
21-Jun-17	H-4	21.436	12.138	-43,38
22-Jun-17	H-3	13.827	21.263	53,78
23-Jun-17	H-2	8.251	21.407	159,45
24-Jun-17	H-1	4.201	5.471	30,23
25-Jun-17	H1	5.350	5.536	3,48
26-Jun-17	H2	4.178	4.466	6,89
27-Jun-17	H+1	2.750	3.040	10,55
28-Jun-17	H+2	2.299	2.572	11,87
29-Jun-17	H+3	2.512	2.247	-10,55
30-Jun-17	H+4	1.769	1.738	-1,75
01-Jul-17	H+5	1.336	1.565	17,14
02-Jul-17	H+6	1.179	1.599	35,62
03-Jul-17	H+7	982	1.205	22,71
<b>TOTAL</b>		<b>91.561</b>	<b>95.359</b>	<b>4,15</b>



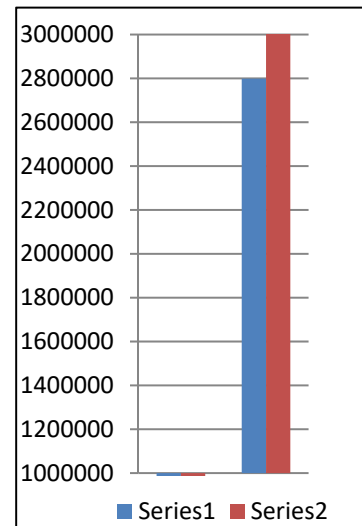
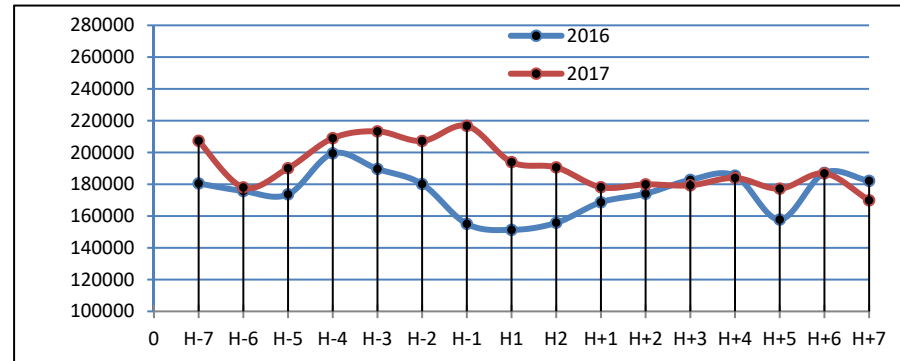
### 1.3. Kendaraan Roda ≥ 4

TANGGAL	HARI	JUMLAH RODA 4 / LEBIH		
		2016	2017	%
	0			
18-Jun-17	H-7	6.988	7.661	9,63
19-Jun-17	H-6	9.701	8.482	-12,57
20-Jun-17	H-5	12.862	11.566	-10,08
21-Jun-17	H-4	16.771	14.227	-15,17
22-Jun-17	H-3	15.815	18.107	14,49
23-Jun-17	H-2	8.197	18.069	120,43
24-Jun-17	H-1	4.454	6.598	48,14
25-Jun-17	H1	9.111	10.800	18,54
26-Jun-17	H2	5.361	6.440	20,13
27-Jun-17	H+1	4.679	4.956	5,92
28-Jun-17	H+2	5.173	4.973	-3,87
29-Jun-17	H+3	6.451	5.684	-11,89
30-Jun-17	H+4	6.287	6.613	5,19
01-Jul-17	H+5	6.120	6.560	7,19
02-Jul-17	H+6	6.910	7.192	4,08
03-Jul-17	H+7	7.423	7.006	-5,62
<b>TOTAL</b>		<b>132.303</b>	<b>144.934</b>	<b>9,55</b>



## 2. ANGKUTAN UDARABANDAR UDARA SOEKARNO-HATTA

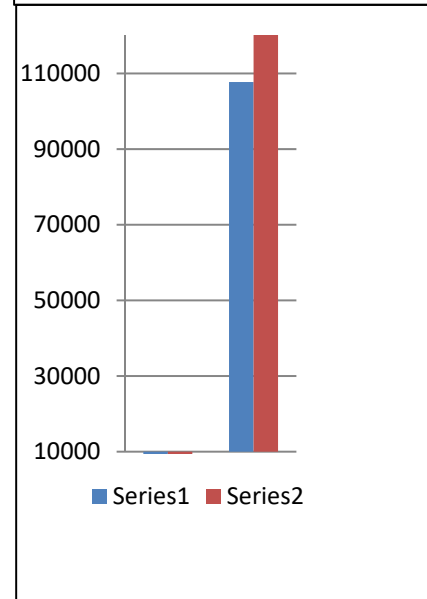
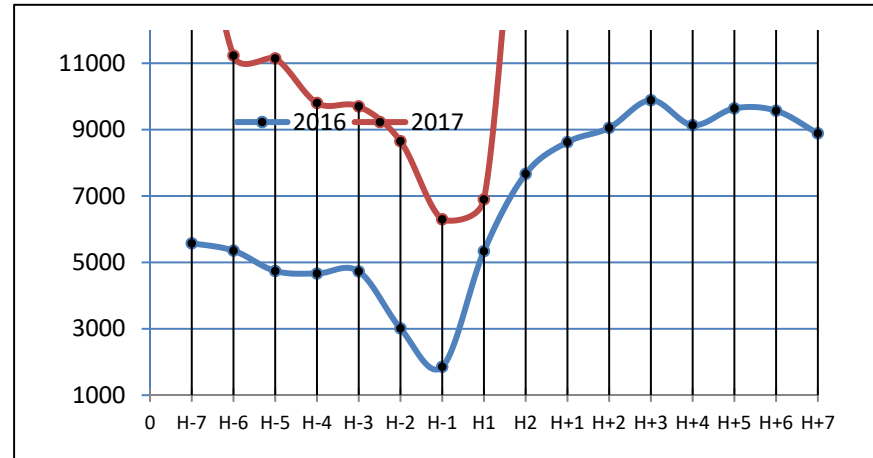
TANGGAL	HARI	JUMLAH PENUMPANG		
		2016	2017	%
	0			
18-Jun-17	H-7	180.515	207.328	14,85
19-Jun-17	H-6	175.727	178.005	1,30
20-Jun-17	H-5	173.633	190.091	9,48
21-Jun-17	H-4	199.402	208.970	4,80
22-Jun-17	H-3	189.665	213.286	12,45
23-Jun-17	H-2	180.110	207.223	15,05
24-Jun-17	H-1	155.071	216.736	39,77
25-Jun-17	H1	151.296	193.959	28,20
26-Jun-17	H2	155.734	190.597	22,39
27-Jun-17	H+1	168.681	178.134	5,60
28-Jun-17	H+2	174.060	179.922	3,37
29-Jun-17	H+3	182.728	179.320	-1,87
30-Jun-17	H+4	185.373	183.968	-0,76
01-Jul-17	H+5	157.780	177.234	12,33
02-Jul-17	H+6	187.162	186.837	-0,17
03-Jul-17	H+7	182.116	169.891	-6,71
<b>TOTAL</b>		<b>2.799.053</b>	<b>3.061.501</b>	<b>9,38</b>



### 3. ANGKUTAN KERETA API

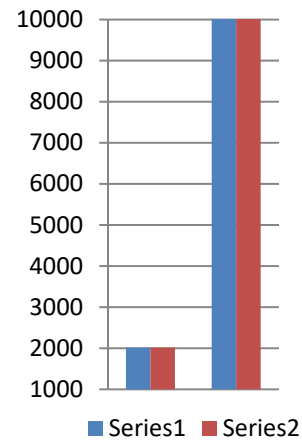
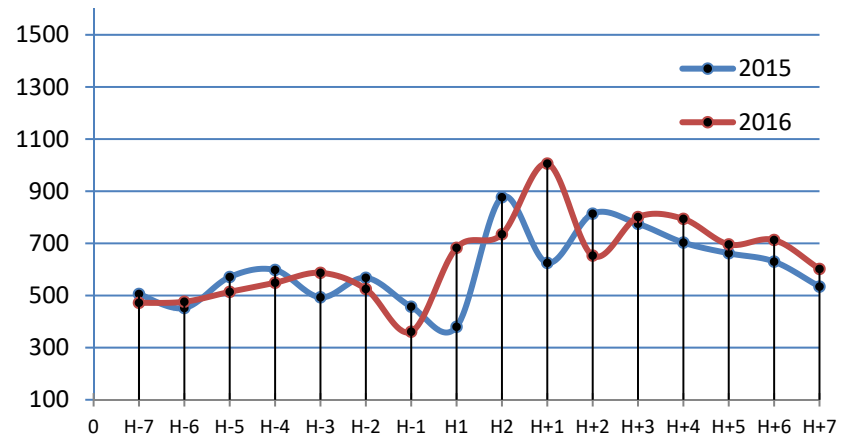
#### 3.1. Stasiun Rangkasbitung

TANGGAL	HARI	JUMLAH PENUMPANG NAIK		
		2016	2017	%
	0			
18-Jun-17	H-7	5.574	17.475	213,51
19-Jun-17	H-6	5.355	11.230	109,71
20-Jun-17	H-5	4.741	11.144	135,06
21-Jun-17	H-4	4.664	9.803	110,18
22-Jun-17	H-3	4.730	9.700	105,07
23-Jun-17	H-2	3.013	8.652	187,16
24-Jun-17	H-1	1.854	6.298	239,70
25-Jun-17	H1	5.339	6.899	29,22
26-Jun-17	H2	7.667	18.866	146,07
27-Jun-17	H+1	8.623	19.912	130,92
28-Jun-17	H+2	9.054	20.365	124,93
29-Jun-17	H+3	9.887	20.403	106,36
30-Jun-17	H+4	9.133	15.214	66,58
01-Jul-17	H+5	9.641	15.685	62,69
02-Jul-17	H+6	9.570	24.154	152,39
03-Jul-17	H+7	8.888	18.596	109,23
<b>TOTAL</b>		<b>107.733</b>	<b>234.396</b>	<b>117,57</b>



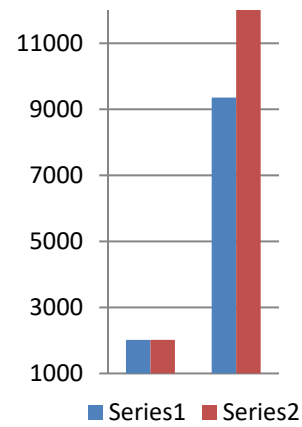
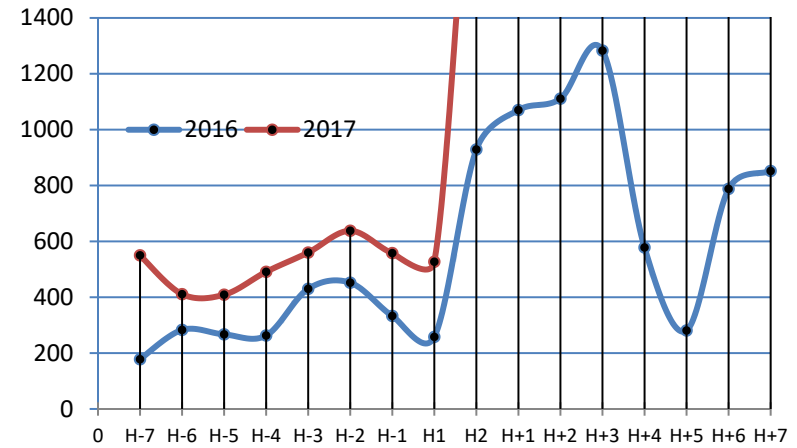
### 3.2. Stasiun Serang

TANGGAL	HARI	JUMLAH PENUMPANG NAIK		
		2016	2017	%
	0			
18-Jun-17	H-7	472	1.330	181,78
19-Jun-17	H-6	476	897	88,45
20-Jun-17	H-5	514	1.030	100,39
21-Jun-17	H-4	549	1.142	108,01
22-Jun-17	H-3	587	1.103	87,90
23-Jun-17	H-2	525	771	46,86
24-Jun-17	H-1	361	603	67,04
25-Jun-17	H1	683	1.134	66,03
26-Jun-17	H2	735	1.330	80,95
27-Jun-17	H+1	1.006	1.217	20,97
28-Jun-17	H+2	653	1.394	113,48
29-Jun-17	H+3	801	1.264	57,80
30-Jun-17	H+4	794	928	16,88
01-Jul-17	H+5	696	1.136	63,22
02-Jul-17	H+6	713	1.142	60,17
03-Jul-17	H+7	602	1.170	94,35
<b>TOTAL</b>		<b>10.167</b>	<b>17.591</b>	<b>73,02</b>



### 3.3. Stasiun Merak

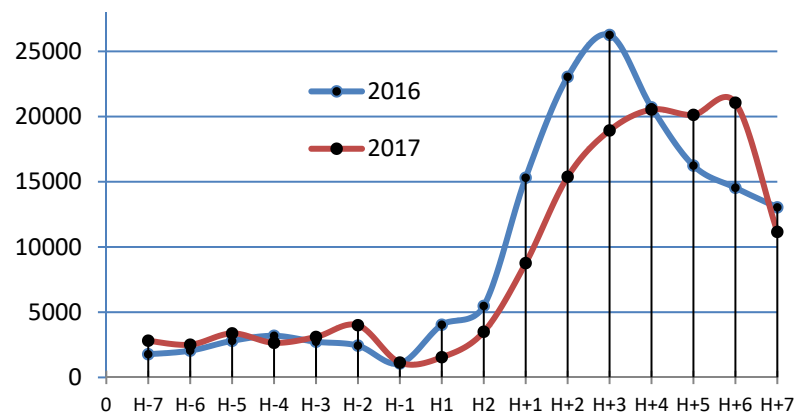
TANGGAL	HARI	JUMLAH PENUMPANG NAIK		
		2016	2017	%
	0			
18-Jun-17	H-7	178	550	208,99
19-Jun-17	H-6	283	411	45,23
20-Jun-17	H-5	267	409	53,18
21-Jun-17	H-4	263	491	86,69
22-Jun-17	H-3	430	560	30,23
23-Jun-17	H-2	452	638	41,15
24-Jun-17	H-1	333	558	67,57
25-Jun-17	H1	258	527	104,26
26-Jun-17	H2	929	2260	143,27
27-Jun-17	H+1	1.070	2.877	168,88
28-Jun-17	H+2	1.111	3.232	190,91
29-Jun-17	H+3	1.283	2.970	131,49
30-Jun-17	H+4	578	2.506	333,56
01-Jul-17	H+5	281	2.269	707,47
02-Jul-17	H+6	788	2.824	258,38
03-Jul-17	H+7	852	2.205	158,80
<b>TOTAL</b>		<b>9.356</b>	<b>25.287</b>	<b>170,28</b>



## 4. ANGKUTAN PENUMPANG UMUM

### 4.1. Terminal Terpadu Merak

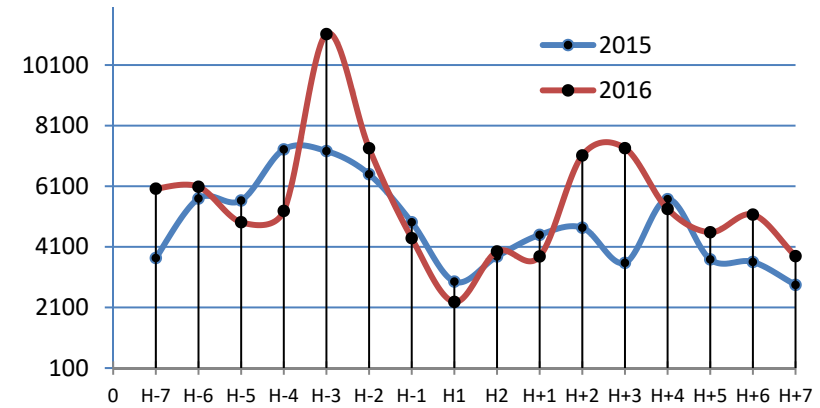
TANGGAL	HARI	JUMLAH PENUMPANG NAIK		
		2016	2017	%
	0			
18-Jun-17	H-7	1.777	2.815	58,41
19-Jun-17	H-6	2.049	2.509	22,45
20-Jun-17	H-5	2.804	3.375	20,36
21-Jun-17	H-4	3.191	2.654	-16,83
22-Jun-17	H-3	2.734	3.104	13,53
23-Jun-17	H-2	2.435	4.000	64,27
24-Jun-17	H-1	1.066	1.137	6,66
25-Jun-17	H1	4.038	1.546	-61,71
26-Jun-17	H2	5.479	3.497	-36,17
27-Jun-17	H+1	15.308	8.761	-42,77
28-Jun-17	H+2	23.042	15.380	-33,25
29-Jun-17	H+3	26.258	18.937	-27,88
30-Jun-17	H+4	20.708	20.535	-0,84
01-Jul-17	H+5	16.241	20.128	23,93
02-Jul-17	H+6	14.538	21.062	44,88
03-Jul-17	H+7	13.039	11.155	-14,45
<b>TOTAL</b>		<b>154.707</b>	<b>140.595</b>	<b>-9,12</b>





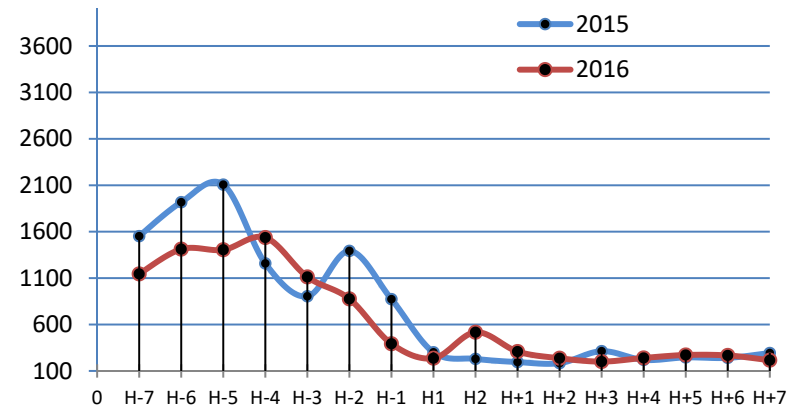
#### 4.2. Terminal Pakupatan, Serang

TANGGAL	HARI	JUMLAH PENUMPANG NAIK		
		2016	2017	%
	0			
18-Jun-17	H-7	6.020	3.167	-47,39
19-Jun-17	H-6	6.083	6.119	0,59
20-Jun-17	H-5	4.913	9.841	100,31
21-Jun-17	H-4	5.285	7.747	46,58
22-Jun-17	H-3	11.122	10.463	-5,93
23-Jun-17	H-2	7.354	10.200	38,70
24-Jun-17	H-1	4.386	7.586	72,96
25-Jun-17	H1	2.283	2.046	-10,38
26-Jun-17	H2	3.948	6.873	74,09
27-Jun-17	H+1	3.785	7.070	86,79
28-Jun-17	H+2	7.117	5.953	-16,36
29-Jun-17	H+3	7.356	7.626	3,67
30-Jun-17	H+4	5.349	5.467	2,21
01-Jul-17	H+5	4.582	5.856	27,80
02-Jul-17	H+6	5.165	6.548	26,78
03-Jul-17	H+7	3.793	9.151	141,26
<b>TOTAL</b>		<b>88.541</b>	<b>111.713</b>	<b>26,17</b>



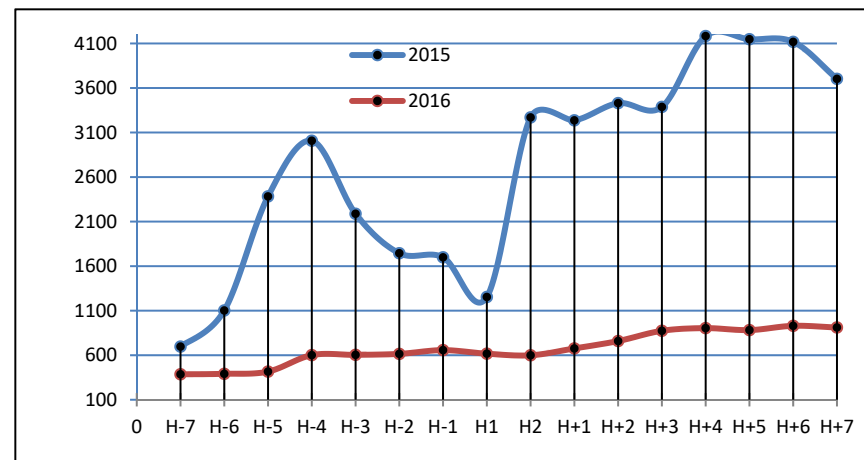
### 4.3. Terminal Porisplawad, Tangerang

TANGGAL	HARI	JUMLAH PENUMPANG NAIK		
		2016	2017	%
	0			
18-Jun-17	H-7	1.145	808	-29,43
19-Jun-17	H-6	1.412	945	-33,07
20-Jun-17	H-5	1.405	845	-39,86
21-Jun-17	H-4	1.537	1.244	-19,06
22-Jun-17	H-3	1.113	1.005	-9,70
23-Jun-17	H-2	876	899	2,63
24-Jun-17	H-1	393	407	3,56
25-Jun-17	H1	237	228	-3,80
26-Jun-17	H2	517	278	-46,23
27-Jun-17	H+1	309	393	27,18
28-Jun-17	H+2	237	102	-56,96
29-Jun-17	H+3	201	383	90,55
30-Jun-17	H+4	240	371	54,58
01-Jul-17	H+5	272	369	35,66
02-Jul-17	H+6	267	176	-34,08
03-Jul-17	H+7	216	171	-20,83
<b>TOTAL</b>		<b>10.377</b>	<b>8.624</b>	<b>-16,89</b>



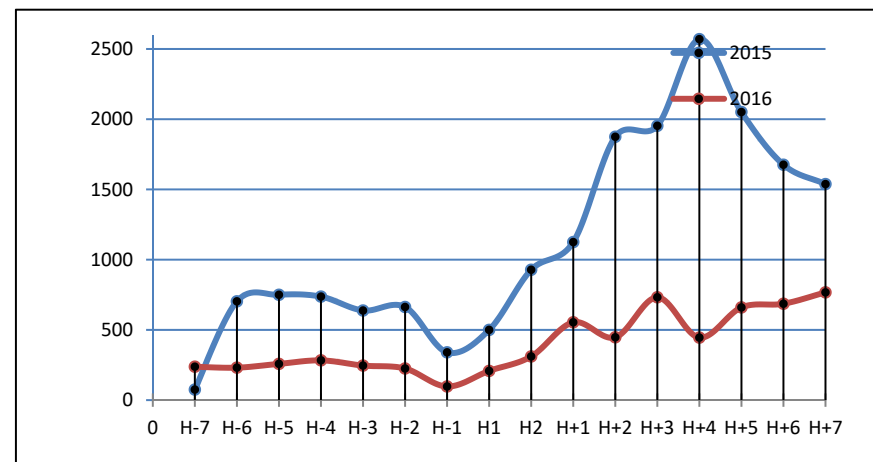
#### 4.4. Terminal Kadu Agung Kab. Lebak

TANGGAL	HARI	JUMLAH PENUMPANG NAIK		
		2016	2017	%
	0			
18-Jun-17	H-7	386	1.528	295,85
19-Jun-17	H-6	391	1.174	200,26
20-Jun-17	H-5	416	403	-3,13
21-Jun-17	H-4	601	804	33,78
22-Jun-17	H-3	604	549	-9,11
23-Jun-17	H-2	615	448	-27,15
24-Jun-17	H-1	657	696	5,94
25-Jun-17	H1	617	147	-76,18
26-Jun-17	H2	599	497	-17,03
27-Jun-17	H+1	676	772	14,20
28-Jun-17	H+2	759	735	-3,16
29-Jun-17	H+3	874	1.362	55,84
30-Jun-17	H+4	904	950	5,09
01-Jul-17	H+5	882	1.231	39,57
02-Jul-17	H+6	930	2.046	120,00
03-Jul-17	H+7	911	1.178	29,31
<b>TOTAL</b>		<b>10.822</b>	<b>14.520</b>	<b>34,17</b>



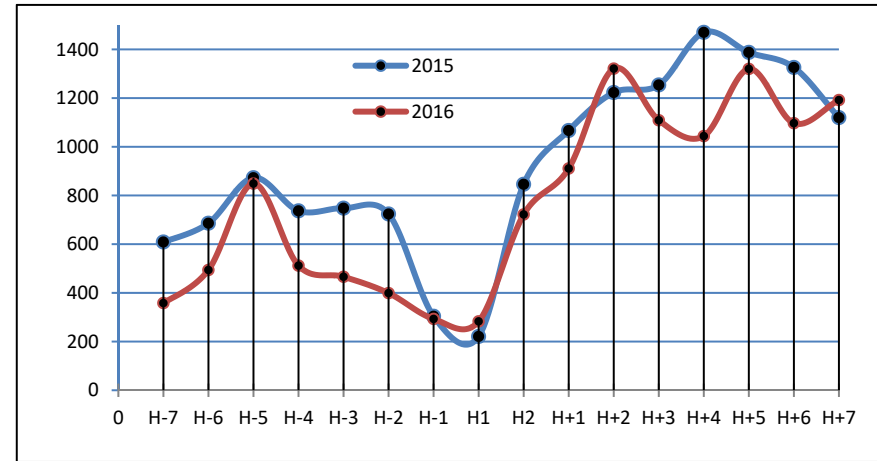
#### 4.5. Terminal Kadu Banen Kab. Pandeglang

TANGGAL	HARI	JUMLAH PENUMPANG NAIK		
		2016	2017	%
	0			
18-Jun-17	H-7	238	159	-33,19
19-Jun-17	H-6	231	165	-28,57
20-Jun-17	H-5	258	146	-43,41
21-Jun-17	H-4	283	155	-45,23
22-Jun-17	H-3	246	147	-40,24
23-Jun-17	H-2	225	178	-20,89
24-Jun-17	H-1	97	119	22,68
25-Jun-17	H1	208	73	-64,90
26-Jun-17	H2	311	202	-35,05
27-Jun-17	H+1	554	744	34,30
28-Jun-17	H+2	447	428	-4,25
29-Jun-17	H+3	732	407	-44,40
30-Jun-17	H+4	445	459	3,15
01-Jul-17	H+5	660	667	1,06
02-Jul-17	H+6	686	563	-17,93
03-Jul-17	H+7	767	509	-33,64
<b>TOTAL</b>		<b>6.388</b>	<b>5.121</b>	<b>5.121</b>



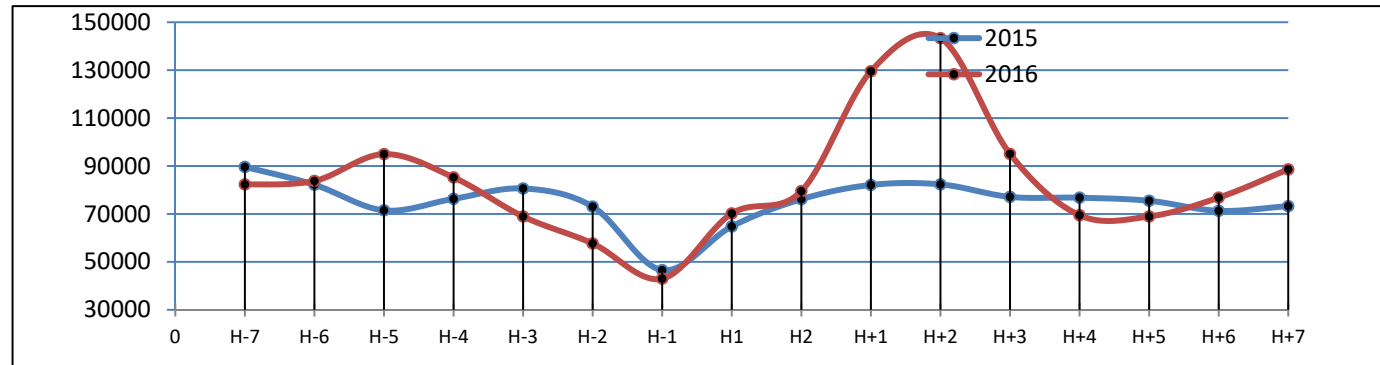
#### 4.6. Terminal Labuan Kab. Pandeglang

TANGGAL	HARI	JUMLAH PENUMPANG NAIK		
		2016	2017	%
	0			
18-Jun-17	H-7	358	698	94,97
19-Jun-17	H-6	494	726	46,96
20-Jun-17	H-5	849	598	-29,56
21-Jun-17	H-4	512	596	16,41
22-Jun-17	H-3	466	615	31,97
23-Jun-17	H-2	399	442	10,78
24-Jun-17	H-1	293	341	16,38
25-Jun-17	H1	283	552	95,05
26-Jun-17	H2	722	635	-12,05
27-Jun-17	H+1	911	984	8,01
28-Jun-17	H+2	1.321	964	-27,02
29-Jun-17	H+3	1.109	1.015	-8,48
30-Jun-17	H+4	1.044	1.070	2,49
01-Jul-17	H+5	1.320	1.232	-6,67
02-Jul-17	H+6	1.097	2.154	96,35
03-Jul-17	H+7	1.192	1.335	12,00
<b>TOTAL</b>		<b>12.370</b>	<b>13.957</b>	<b>12,83</b>



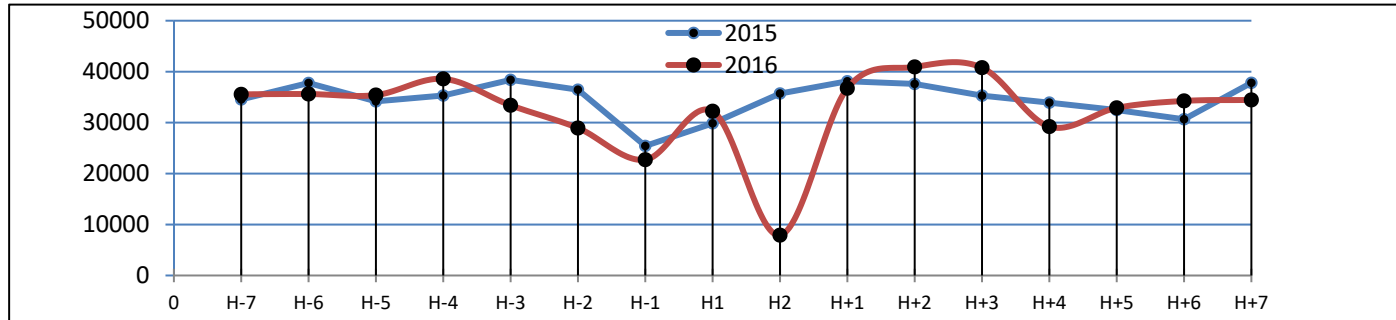
## 5. ARUS LALU LINTAS KENDARAAN DI JALAN TOL JAKARTA-MERAK

### 5.1. Gerbang Tol Cikupa



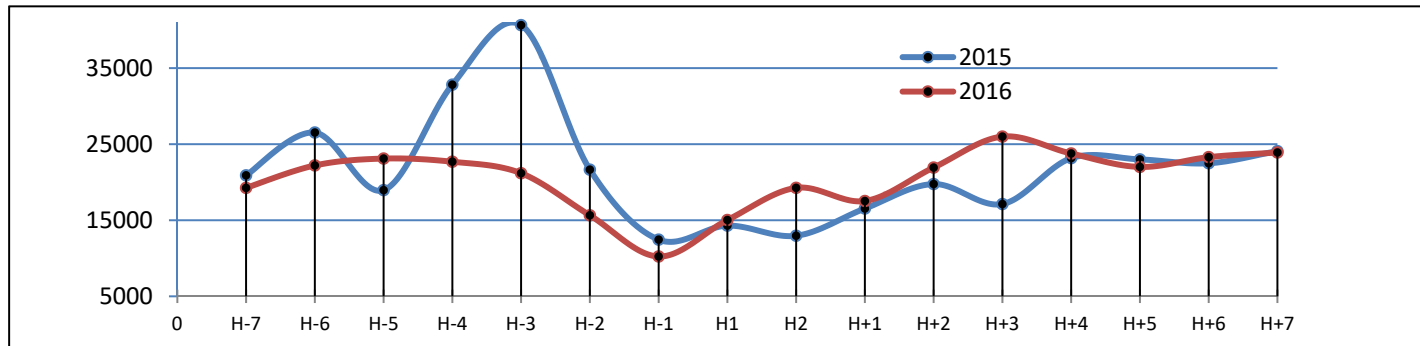
TANGGAL	HARI	2016			2017			%
		KELUAR	MASUK	JUMLAH	KELUAR	MASUK	JUMLAH	
	0							
18-Jun-17	H-7	40.182	42.128	82.310	42.836	28.913	71.749	-12,83
19-Jun-17	H-6	38.880	44.879	83.759	39.522	29.510	69.032	-17,58
20-Jun-17	H-5	47.435	47.530	94.965	41.877	38.510	80.387	-15,35
21-Jun-17	H-4	39.233	46.032	85.265	42.875	48.635	91.510	7,32
22-Jun-17	H-3	32.849	36.099	68.948	43.515	54.392	97.907	42,00
23-Jun-17	H-2	26.573	31.108	57.681	34.300	43.662	77.962	35,16
24-Jun-17	H-1	19.152	23.847	42.999	30.311	30.840	61.151	42,21
25-Jun-17	H1	32.181	38.017	70.198	31.906	37.112	69.018	-1,68
26-Jun-17	H2	38.275	41.250	79.525	39.998	44.561	84.559	6,33
27-Jun-17	H+1	62.091	67.462	129.553	51.339	40.574	91.913	-29,05
28-Jun-17	H+2	68.351	74.998	143.349	46.580	42.000	88.580	-38,21
29-Jun-17	H+3	53.636	41.418	95.054	44.410	38.606	83.016	-12,66
30-Jun-17	H+4	41.296	28.187	69.483	40.976	36.327	77.303	11,25
01-Jul-17	H+5	33.270	35.675	68.945	46.804	43.916	90.720	31,58
02-Jul-17	H+6	43.776	33.042	76.818	54.960	42.711	97.671	27,15
03-Jul-17	H+7	44.560	44.036	88.596	39.746	42.469	82.215	-7,20
<b>TOTAL</b>		<b>661.740</b>	<b>675.708</b>	<b>1.337.448</b>	<b>671.955</b>	<b>642.738</b>	<b>1.314.693</b>	<b>-1,70</b>

## 5.2. Gerbang Tol Serang Timur



TANGGAL	HARI	2016			2017			%
		KELUAR	MASUK	JUMLAH	KELUAR	MASUK	JUMLAH	
	0							
18-Jun-17	H-7	17.631	17.922	35.553	16.577	19.758	36.335	2,20
19-Jun-17	H-6	17.497	18.117	35.614	18.492	18.851	37.343	4,85
20-Jun-17	H-5	16.639	18.770	35.409	19.167	19.954	39.121	10,48
21-Jun-17	H-4	19.851	18.735	38.586	19.572	20.372	39.944	3,52
22-Jun-17	H-3	16.566	16.834	33.400	20.471	20.687	41.158	23,23
23-Jun-17	H-2	14.794	14.141	28.935	19.615	19.700	39.315	35,87
24-Jun-17	H-1	12.602	10.119	22.721	14.439	12.299	26.738	17,68
25-Jun-17	H1	16.662	15.582	32.244	17.357	19.146	36.503	13,21
26-Jun-17	H2	3.601	4.316	7.917	18.727	18.963	37.690	376,06
27-Jun-17	H+1	18.020	18.725	36.745	18.007	19.541	37.548	2,19
28-Jun-17	H+2	18.946	21.980	40.926	16.754	19.854	36.608	-10,55
29-Jun-17	H+3	18.531	22.249	40.780	17.217	19.996	37.213	-8,75
30-Jun-17	H+4	16.830	12.396	29.226	15.273	15.966	31.239	6,89
01-Jul-17	H+5	15.860	17.040	32.900	18.860	18.879	37.739	14,71
02-Jul-17	H+6	16.722	17.538	34.260	18.787	22.165	40.952	19,53
03-Jul-17	H+7	16.935	17.516	34.451	18.067	20.309	38.376	11,39
<b>TOTAL</b>		<b>257.687</b>	<b>261.980</b>	<b>519.667</b>	<b>287.382</b>	<b>306.440</b>	<b>593.822</b>	<b>14,27</b>

### 5.3. Gerbang Tol Merak



TANGGAL	HARI	2016			2017			%
		KELUAR	MASUK	JUMLAH	KELUAR	MASUK	JUMLAH	
	0							
18-Jun-17	H-7	11.167	8.089	19.256	9.676	8.582	18.258	-5,18
19-Jun-17	H-6	13.576	8.628	22.204	11.974	8.233	20.207	-8,99
20-Jun-17	H-5	13.984	9.125	23.109	13.349	8.998	22.347	-3,30
21-Jun-17	H-4	13.671	9.022	22.693	17.983	10.261	28.244	24,46
22-Jun-17	H-3	13.170	8.012	21.182	20.322	14.984	<b>35.306</b>	66,68
23-Jun-17	H-2	9.595	6.052	15.647	18.480	10.703	29.183	86,51
24-Jun-17	H-1	6.248	3.988	10.236	7.240	5.224	12.464	21,77
25-Jun-17	H1	9.744	5.286	15.030	10.619	7.239	17.858	18,82
26-Jun-17	H2	9.571	9.688	19.259	8.775	6.784	15.559	-19,21
27-Jun-17	H+1	6.584	10.947	17.531	6.928	9.184	16.112	-8,09
28-Jun-17	H+2	7.952	13.975	21.927	7.094	12.447	19.541	-10,88
29-Jun-17	H+3	8.879	17.121	26.000	7.907	14.133	22.040	-15,23
30-Jun-17	H+4	9.137	14.638	23.775	8.692	16.018	24.710	3,93
01-Jul-17	H+5	9.366	12.641	22.007	8.757	16.938	25.695	16,76
02-Jul-17	H+6	10.622	12.674	23.296	9.610	15.770	25.380	8,95
03-Jul-17	H+7	10.902	13.009	23.911	9.041	11.866	20.907	-12,56
<b>TOTAL</b>		<b>164.168</b>	<b>162.895</b>	<b>327.063</b>	<b>176.447</b>	<b>177.364</b>	<b>353.811</b>	8,18